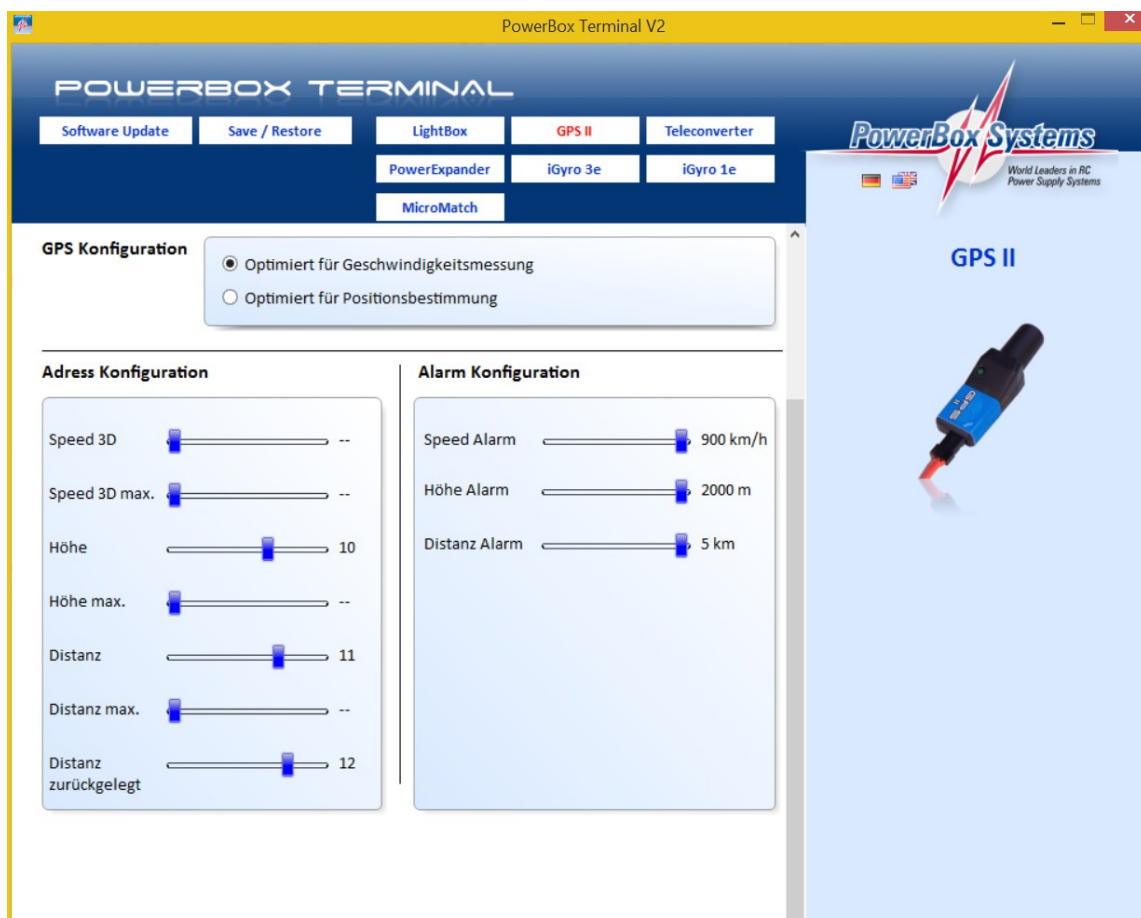


## Technical Note PMSB-330 and PowerBox Systems GPS-2

Customer who wants to use the PMSB-330 IAS Speed Sensor in parallel with the GPS-2 please follow this procedure. GPS-2 must have software 0.1.1 or above.

1. Connect the GPS-2 with USB cable to you PC, apply power and start the PB terminal programm. If not done already you can dowload the terminal programm from the PowerBox Systems web site.
2. Inside the terminal programm click on tab GPS-2.
3. Follow the procedure
4. After the GPS-2 configuration page has opened select Multiplex MSB
5. Please de-select the sensor adress #9 3D speed and speed 3D max. (no adress, just a dash). Keep the other addresses as shown in the picture below.



6. Use a V-Cable in order to connect the GPS-2 and the PMSB-330 to the PB Mercury or the PB Royal SRS GPS port.
7. For further information please refer to the PMSB-330 manual.

**Mercury and Royal SRS** will now get the adaptive speed data from the PMSB-330 and can transmit IAS speed, distance, trip distance and altitude values via telemetry stream to the attached RC system. This means a double win situation for the customer.

Please note that GPS Longitude and Latitude data will not be sent and provided inside the telemetry stream.

Futaba PB Sbus-2 display will provide:

- V-Batt1
- V-Bat2
- Bat1 Capacity (only Royal SRS)
- Bat2 Capacity (only Royal SRS)
- Fades RX1
- Fades RX2
- Lost Frames
- Holds
- IAS Speed from PMSB-330
- Altitude
- Distance
- Trip distance

Jeti-EX display can provide:

- V-Batt1
- V-Bat2
- Bat1 Capacity (only Royal SRS)
- Bat2 Capacity (only Royal SRS)
- Failsave
- Frames
- Fades RX1
- Fades RX2
- IAS Speed from PMSB-330
- Altitude
- Distance
- Trip distance