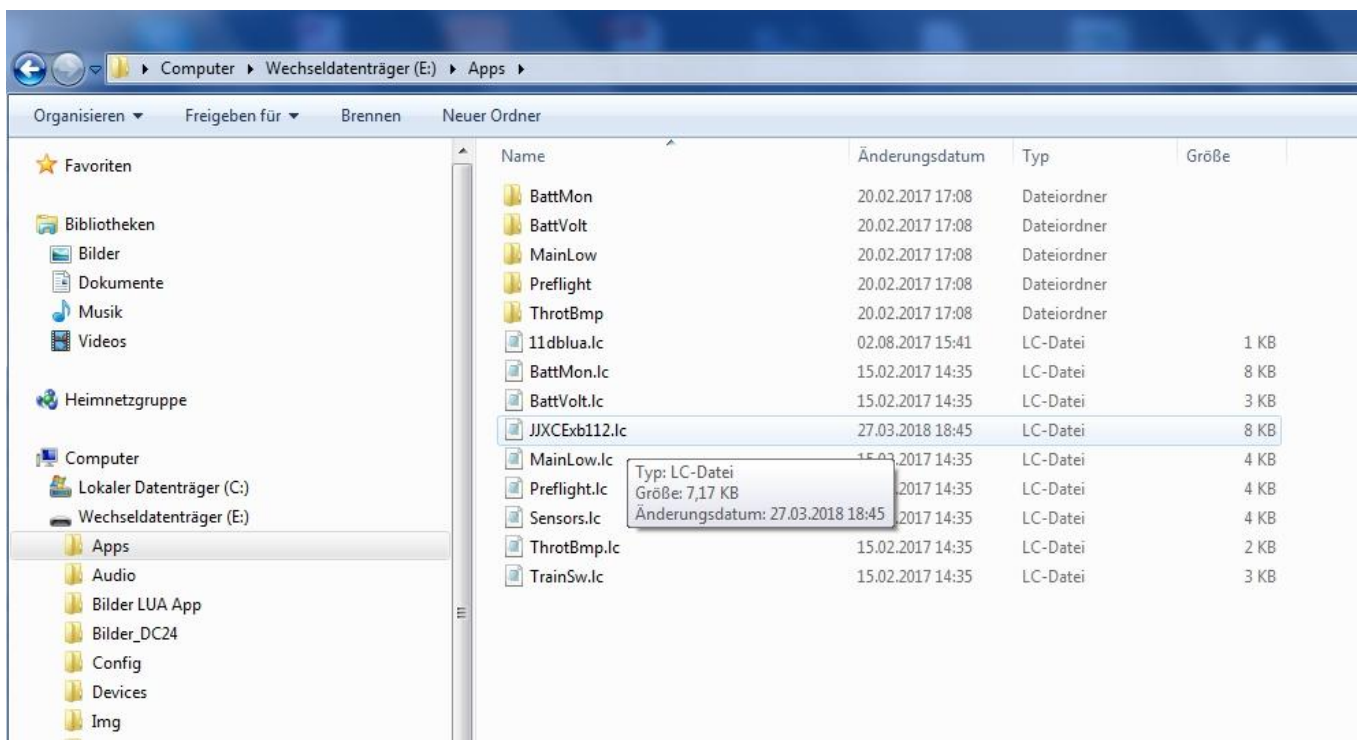
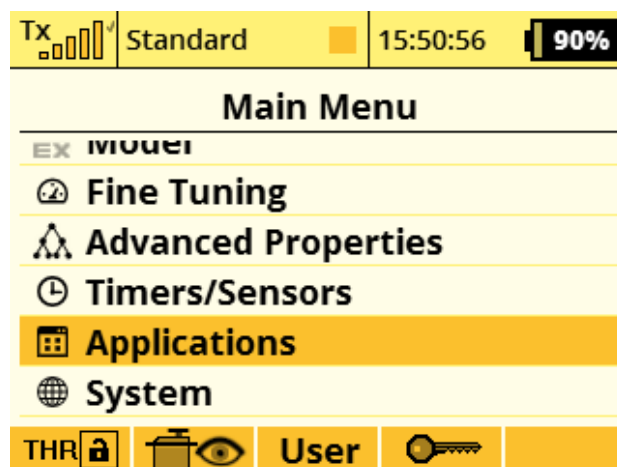


Installing the Pro-JJXC-EXbus LUA APP

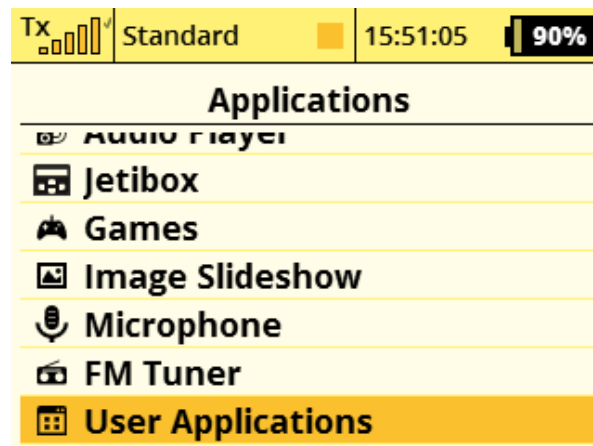
1. Unzip the provided .zip file in a work folder of your PC.
2. Inside the .zip file you will find a file with the name “JJXCExb112.lc”. This is a compiled LUA file ready to use with your Jeti TX.
3. Copy this file to you Jeti TX inside the Apps folder like shown in the following picture.



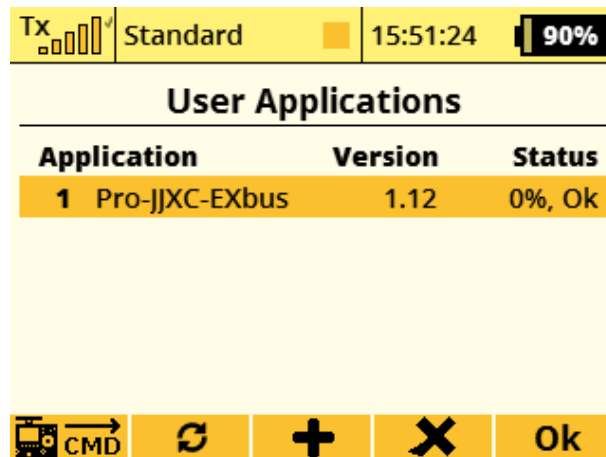
4. Stop the USB connection and start your Jeti TX in the regular way.
5. Go to “Main Menu” and select “Applications”.



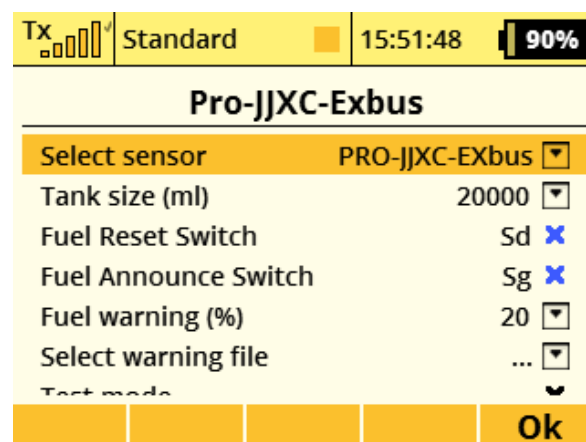
6. Inside “Applications” call “User Applications”



7. Inside “User Applications” install/call up with the plus sign the file JJXCExb112. You will then have installed Pro-JJXC-EXbus in your application list like shown below.



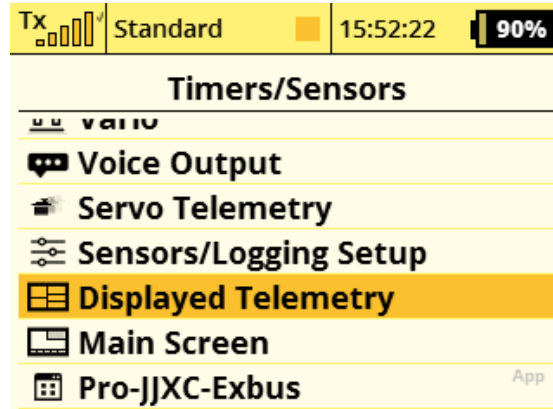
8. Click with the TX rotary encoder on the highlighted Pro-JJXC-EXbus line and you will enter the Pro-JJXC-EXbus APP setup menu.



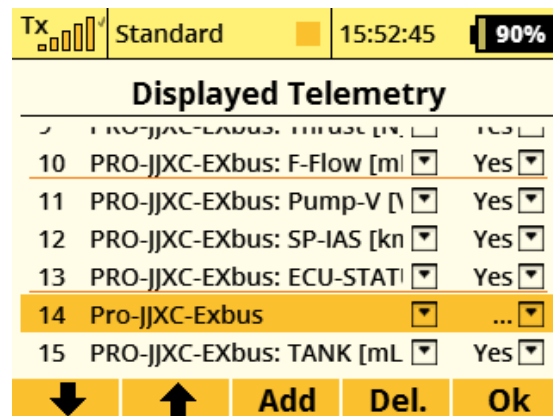
Inside the setup menu you can define the self explaining items and values. It is important that you select the Pro-JJXC-EXbus sensor in line one. The Pro-JJXC-EXbus data converter hardware must be installed in advance. Please refer to the Pro-JJXC-EXbus handbook that comes with the converter

hardware. It is important too that you assign the tank size. This volume must match to the value that you have set in your Hornet-3 ECU. Switches and fuel warning are up to your choice. Test mode is only needed if you run the APP without the Pro-JJXC-EXbus hardware.

9. Now leave the menu above and go to “Timers/Sensor” menu. Select “Display Telemetry”!



10. Inside “Display Telemetry” add Pro-JJXC-EXbus as a display like shown in the following picture at line 14.



11. Leave the above menu and go to the TX main home screen. There you will find your new APP

